

TONNAGE (USA T)	TONNAGE (METRIC T)	PRESS #	BRAND	Serial	Country Origin	YEAR	TYPE
2,200	2,000	12	TOSHIBA	826506	JAPAN	2008	IS2200DF-200A

CLAMPING		PLATE						Nozzle
MOLD OPENING FORCE (kN)	STROKE (mm)	BETWEEN TIE BARS		DAYLIGHT	PLATEN DIMENSIONS (WIDTH x HEIGHT) (mm)	MOLD THICKNESS (mm)	LOCATOR RING DIAMETER (MM)	Radio (inch)
		WIDTH (mm)	HEIGHT (mm)	MAX (mm)				
1610	2,600	1,800	1,600	2700 ~ 3500	2450 x 2250	900 ~ 1,700	127	3/4

SCREW							EJECTION		
DIA (mm)	SHOT WEIGHT (g)	SHOT WEIGHT (lbm)	MAX.INJ. PRESSURE (kgf/cm2)	SPEED (RPM)	PLASTICIZING CAPACITY(PS) Kg/hr	INJ.RATE (cm ³ /sec)	STROKE (mm)	FORCE (kg-f)	FORCE (tons)
140	10,890	24.0	1,733.5	90	690.00	1370	350	68525	69

UTILIZED OIL QUANTITY (L)	MACHINE DIMENSIONS			MACHINE WEIGHT (t)
	L (m)	W (m)	H (m)	
3700	13.5	4.0	3.6	150

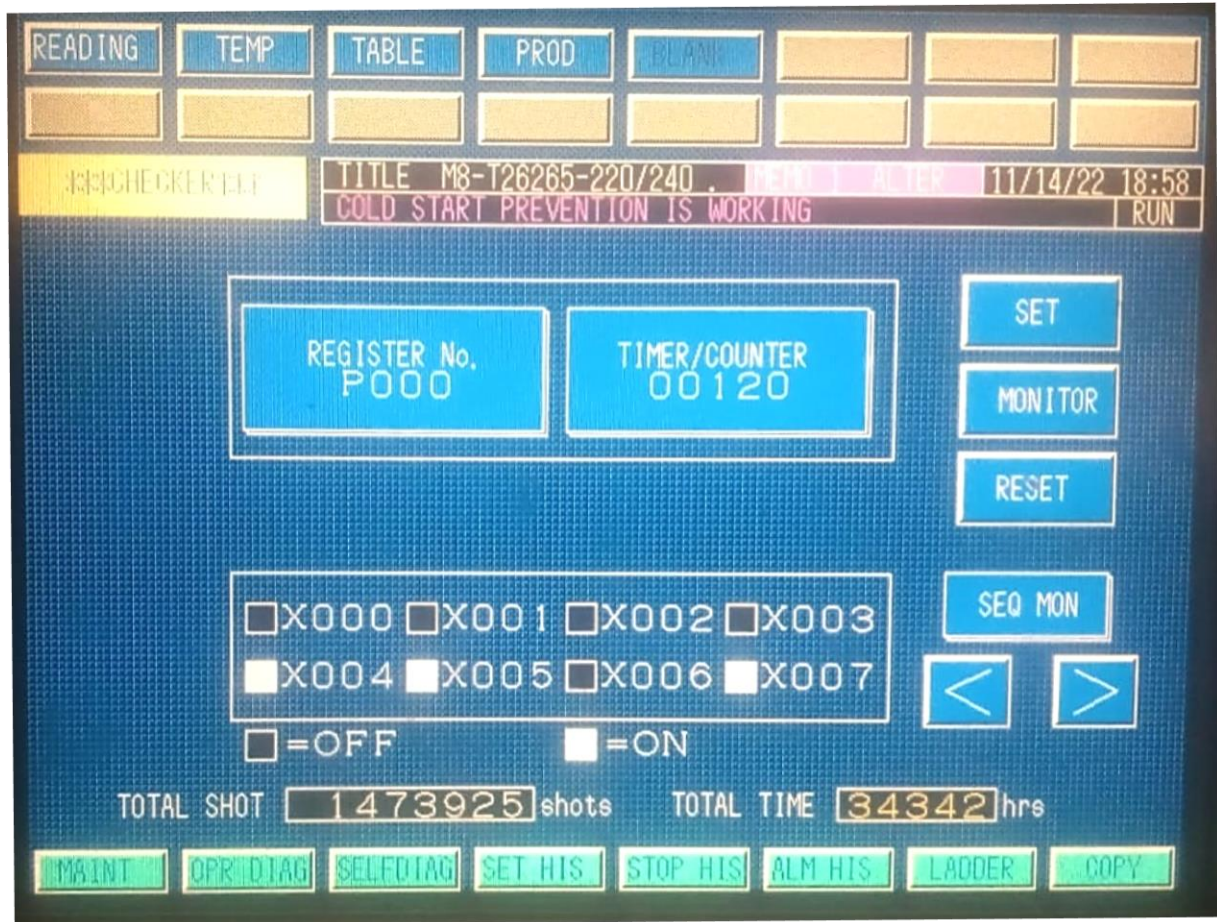
Toshiba Molding Injection Machine Model IS2200DF -200A



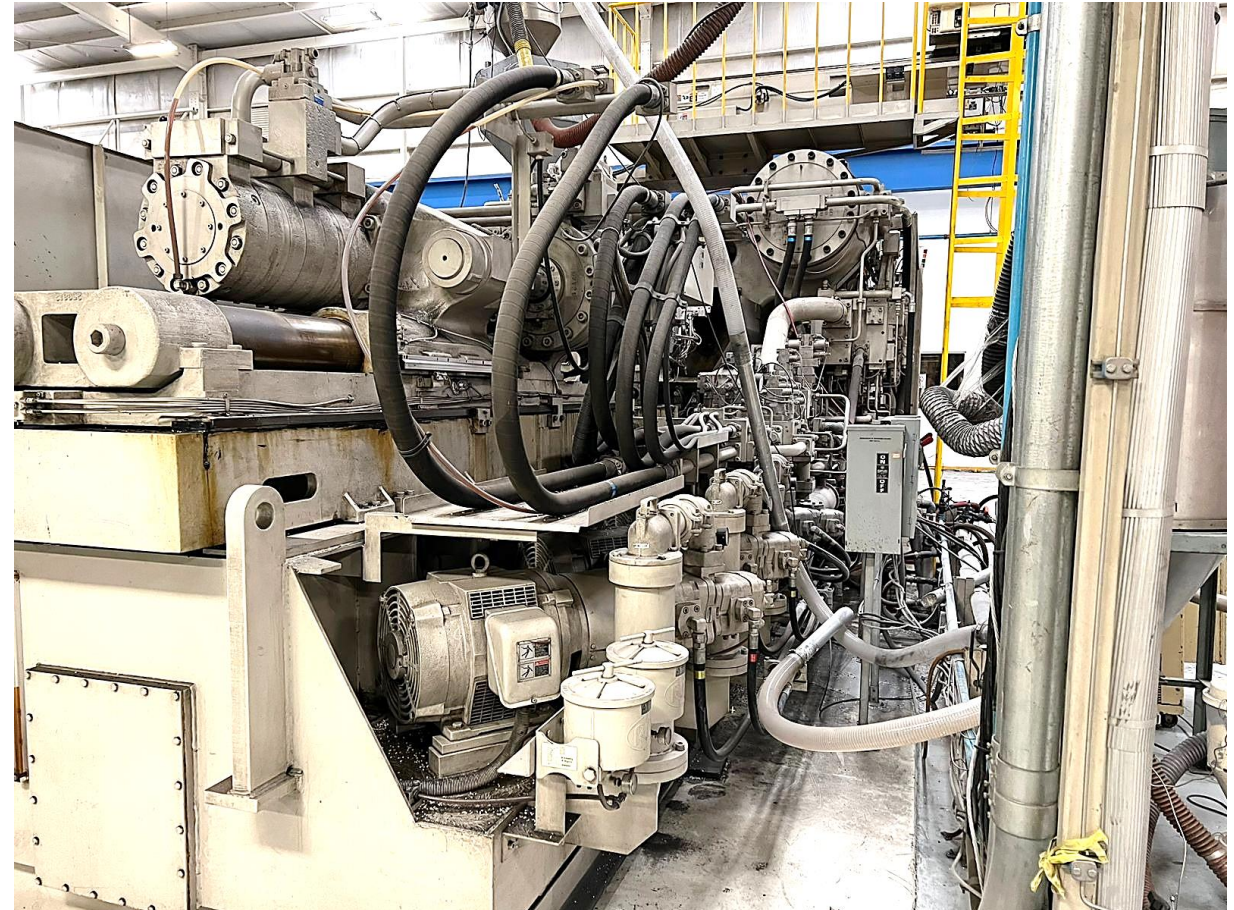
Controller INJECTVISOR V21

Total Shots: 1,473,925

Total Hrs: 34,342









Robot Star TW-1800VI-480
Controller: STEC-480

